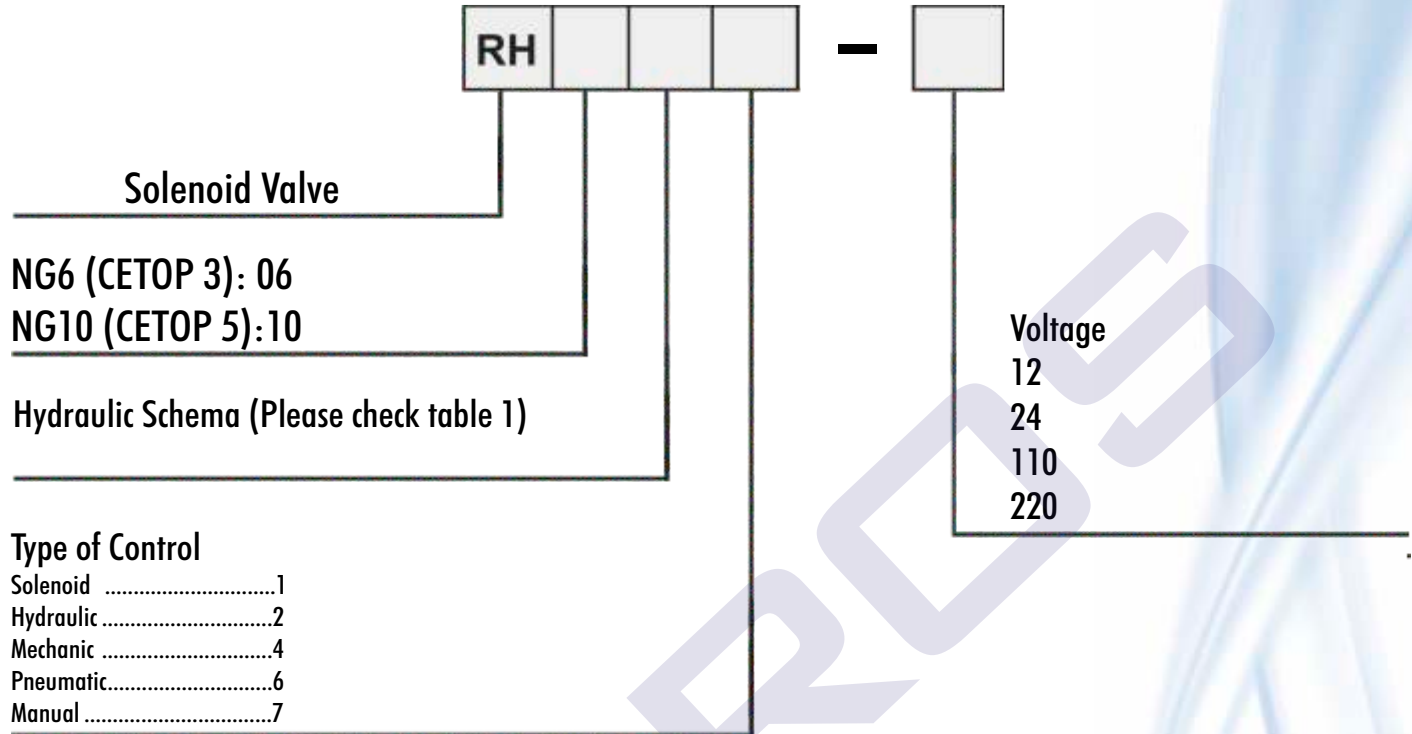


**ORDER CODES**



Order example: RH06101-24

**HYDRAULIC SCHEMES (Table 1)**

CODE	SYMBOL	CODE	SYMBOL	CODE	SYMBOL
00		16		39	
01		17		40	
02		18		41	
04		20*		42	
05		21		45	
06		24		61	
08		26		62	
10		27		64	
11		28		68	
12		32		70	
13		33		83	
14		36		20* - with detent	



### NG 06 SOLENOID VALVES

Code Number	Description	Max. Flow L/min	Max. Pressure Bar
RH06 101 12V.24V.220V	SINGLE COIL	80	350
RH06 011 12V.24V.220V	CLOSED CENTER	80	350
RH06 021 12V.24V.220V	OPEN CENTER	80	350
RH06 041 12V.24V.220V	J CENTER	80	350
RH06 001 12V.24V.220V	H CENTER	80	350



### NG 10 SOLENOID VALVES

Code Number	Description	Max. Flow L/min	Max. Pressure Bar
RH10 101 12V.24V.220V	SINGLE COIL	120	315
RH10 011 12V.24V.220V	CLOSED CENTER	120	315
RH10 021 12V.24V.220V	OPEN CENTER	120	315
RH10 041 12V.24V.220V	J CENTER	120	315
RH10 001 12V.24V.220V	H CENTER	120	315



### MANUAL CONTROL VALVE

Code Number	Description	Max. Flow L/min	Max. Pressure Bar
RH06027	Manual control valve	60	315

Spool type: Open center



### NG6

### SOLENOID VALVES BLOCKS

Type	Connection Type	Max. Flow L/min	Max. Pressure Bar
NG6-1 BLOCK	Single	40	220
NG6-2 BLOCK	Two fold	40	220
NG6-3 BLOCK	Three fold	40	220
NG6-4 BLOCK	Four fold	40	220
NG6-5 BLOCK	Five fold	40	220
NG6-6 BLOCK	Six fold	40	220



NG6-P1-RV-R1



NG6-P1-RV-R2

### NG6

### SOLENOID VALVES BLOCKS

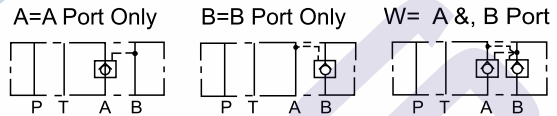
With Relief Valves

Type	Connection Type	Max. Flow L/min	Max. Pressure Bar
NG6-1 BLOCK/RV22	Single	40	220
NG6-2 BLOCK/RV22	Two fold	40	220
NG6-3 BLOCK/RV22	Three fold	40	220
NG6-4 BLOCK/RV22	Four fold	40	220
NG6-5 BLOCK/RV22	Five fold	40	220
NG6-6 BLOCK/RV22	Six fold	40	220
<b>NEW</b> NG6-P1-RV-R1	Single	40	220
<b>NEW</b> NG6-P1-RV-R2	Single	40	220

NG10 & serial connection blocks are also available. Please contact us.

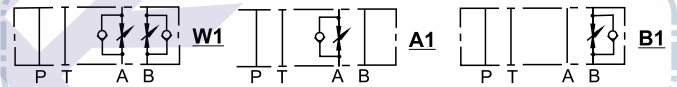
### MODULER PILOT OPERATED CHECK VALVES

Code Number	Type	Max. Flow L/min	Max. Pressure Bar
MPC-02A-50-50-A	NG6	40	250
MPC-02B-50-50-B	NG6	40	250
MPC-02W-50-50-D	NG6	40	250
MPC-03A-50-50-A	NG10	70	250
MPC-03B-50-50-B	NG10	70	250
MPC-03W-50-50	NG10	70	250



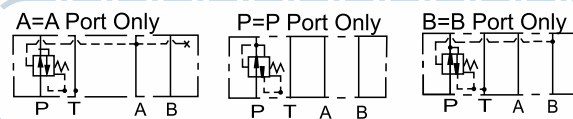
### MODULAR FLOW CONTROL VALVES

Code Number	Type	Max. Flow L/min	Max. Pressure Bar
MTC-02-A-50-A LINE	NG6	40	250
MTC-02-B-50-B LINE	NG6	40	250
MTC-02-W-50-D	NG6	40	250
MTC-03-A-50-A LINE	NG10	70	250
MTC-03-B-50-B LINE	NG10	70	250
MTC-03-W-50-D	NG10	70	250



### MODULAR PRESSURE REDUCING VALVES

Code Number	Type	Max. Flow L/min	Max. Pressure Bar
MPR-02A-3A-50-A LINE	NG6	40	250
MPR-02B-3A-50-B LINE	NG6	40	250
MPR-02P-3-50P L	NG6	40	250
MPR-03A-3A-50-A LINE	NG10	70	250
MPR-03B-3A-50-B LINE	NG10	70	250
MPR-03-P-3-50	NG10	70	250



### MODULAR RELIEF VALVES

Code Number	Type	Max. Flow L/min	Max. Pressure Bar
MR-02A-3-50-A L	NG6	40	250
MR-02B-3-50-B L	NG6	40	250
MR-02P-3-50-P L	NG6	40	250
MR-02W-3-50-AB LINE	NG6	40	250
MR-03A-3-50-A L	NG10	70	250
MR-03B-3-50-B L	NG10	70	250
MR-03P-3-50	NG10	70	250
MR-03W-3-50-AB LINE	NG10	70	250

