



Pressure regulating valve

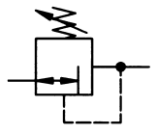
Non-self-relieving

Stainless steel 1.4571

G 1/4

777.301 to 777.303

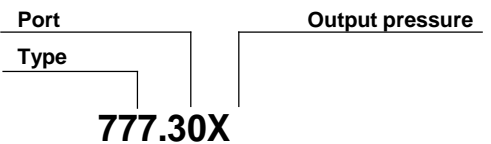
0.1 to 2.0 bar
0.2 to 6.0 bar
0.5 to 10.0 bar



Characteristics

Type	777.30X
Port	G 1/4
Pressure gauge port	G 1/8
Type of construction	Diaphragm pressure regulator with non-self-relieving design
Mounting position	Any
Input pressure p₁	Max. 25 bar
Output pressure p₂	0.5 to 10.0 bar (standard)
Temperature Ambient / medium	Max. 80°C (other temperature ranges on request)
Mounting type	In-line, bracket kit Panel mounting, cutout Ø30.5
Weight [kg]	0.204

Ordering information



Output pressure	
X=	Control range
1	0.1 to 2.0 bar
2	0.2 to 6.0 bar
3	0.5 to 10.0 bar

Materials

Designation	Material
Head piece	1.4571
Spring bonnet	POM
Diaphragm	FKM
Valve cone	1.4571
Pressure spring	1.4571
Valve seat	1.4571
O-ring 9 x 2	FKM
Counter-pressure spring	1.4571

Operation

Stainless steel pressure regulating valve, spring bonnet / adjusting knob made of POM

- Can be locked by pushing the knob down
- Pressure gauge **not** included (see "Accessories")

Important

The valve must not be used as a safety device in conjunction with explosive media and / or media which could be detrimental to health. The user is responsible for ensuring compliance with all relevant regulations and standards.

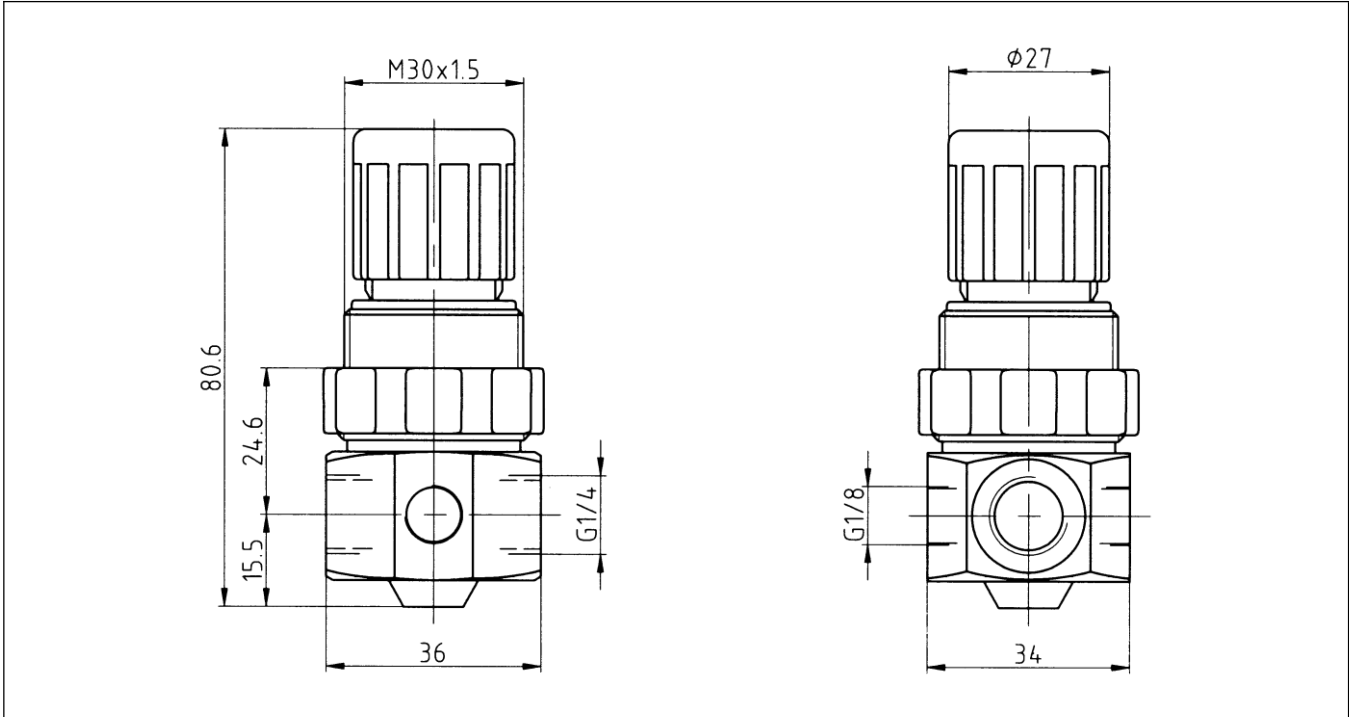
No liability can be accepted.

Applications

Stainless steel pressure regulating valve for gaseous and liquid media in the following areas:

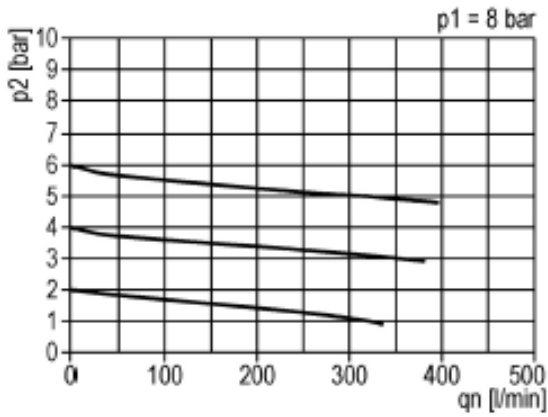
- Food processing, medical equipment, mining and all applications where excellent resistance to corrosion is essential.

Dimensions [mm]



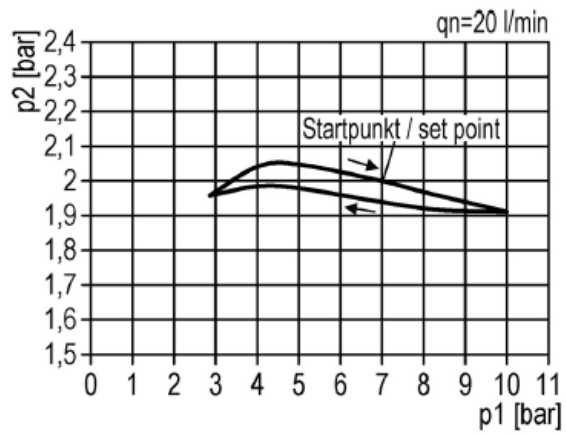
Flow characteristic

Medium: Air



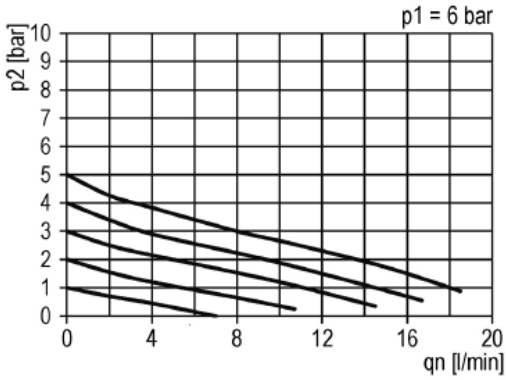
Hysteresis

Medium: Air



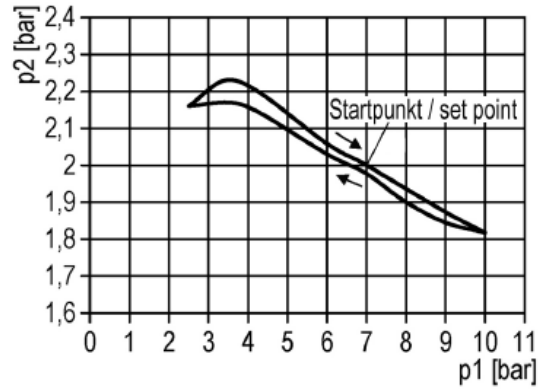
Flow characteristic

Medium: Water



Hysteresis

Medium: Water



Accessories

Designation	Part No.
Mounting kit (bracket: galvanised steel, fixing nut: brass with a bare metal surface)	MV 30
Pressure gauge, Ø 40, G 1/8, 0 to 10 bar	110.46-ES
Pressure gauge, Ø 40, G 1/8, 0 to 2.5 bar	110.43-ES

Main spare parts

Designation	Part No.
Set of wearing parts - Diaphragm, compl., FKM - Valve cone, compl. - O-ring 9 x 2	22.777.4