



Characteristics

Type	572.12 D
Type of construction	Diaphragm pressure regulator with self-relieving design (reversible) Centrifugal filter Stainless steel filter element
Pipe thread	G 1/2
Pressure gauge	G 1/4
Control range	1.0 to 15.0 bar
	Special versions on request
	- NPT threads
Input pressure	Max. 30 bar
Mounting position	Vertical
Drain	Manuel drain valve
Mounting type	Bracket and nut, hole Ø50.5 mm
Temperature	
Medium	-20 °C to +130 °C
Ambient	-20 °C to +60 °C
Filter element	
Filter rating	50 µm
Bowl Contents	0,28 l
Weight [g]	2200 / 2350 with pressure gauge

Materials

Part	Material
Head piece	1.4404 (AISI 316L)
Spring bonnet	1.4404 (AISI 316L)
Adjusting screw	1.4301
Diaphragm	PTFE on NBR-carrier
Valve cone	1.4404 (AISI 316L) / FKM
O-rings	FKM
Filter element	1.4404 (AISI 316L)

Main spare parts

Designation	Part No.
Repair kit	22.57224.4
Press. gauge, 1.4571, G 1/4, Ø 63 mm	
0 to 10.0 bar	4084
0 to 16.0 bar	4085

Operation

- Stainless steel filter regulator containing no non-ferrous metals for use in the food processing, chemical, mining, plant construction and special machinery industries
- Suitable for use in medical equipment
- All applications where excellent resistance to corrosion is essential

→ **Not suitable for liquid media**

No liability can be accepted if explosive media or media which could be detrimental to health are used!

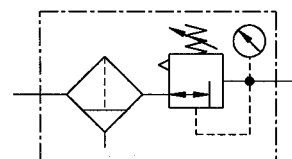
Filter regulator

Size 2

G 1/2

1.0 to 15.0 bar

572.12 D

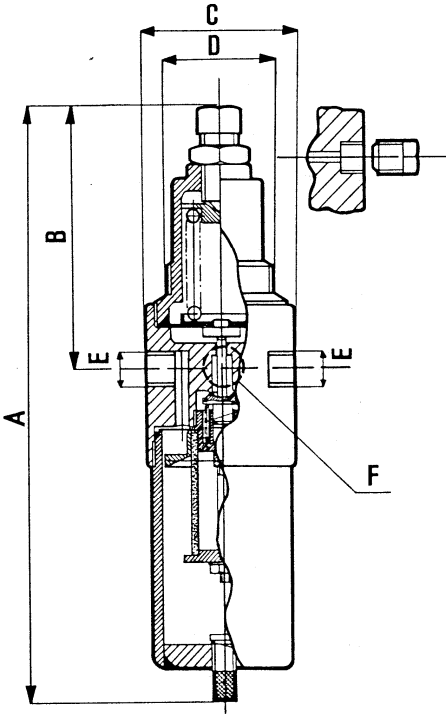


Ordering information

Designation	Order No.
Filter regulator (reversible) with self-relieving design and pressure gauge Control range	
1.0 to 15.0 bar	572.12 D
Accessories	
- Mounting bracket with fixing nut	576/3
- Pressure gauge	
0 to 10 bar	4084
0 to 16 bar	4085

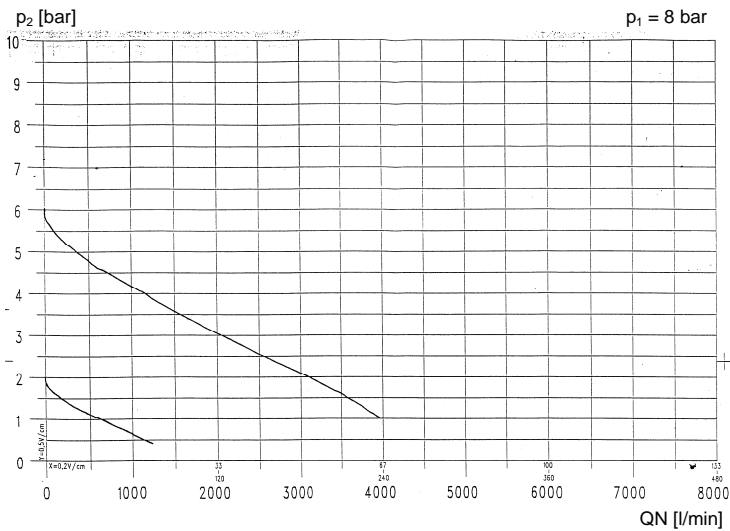


Dimensions [mm]



Type	Press. gauge Ø	A	B	C	D	E	F
		[mm]					
572.12	63	260	127	80	50	G 1/2	G 1/4

Flow characteristic



Hysteresis

