



## Filter regulators

Size 1

**C 11**

G 1/4

**C 12**

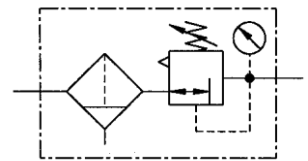
G 3/8

1.1 to 3 bar

1.2 to 6 bar

0.5 to 10 bar

0.5 to 16 bar



### Characteristics

Type	C 11	C 12
Port	G 1/4	G 3/8
Pressure gauge port	G 1/4	
Type of construction	Diaphragm pressure regulator with self-relieving design Centrifugal filter Sintered filter element	
	<b>Special versions on request</b>	
Input pressure p1	16 bar with plastic bowl 20 bar with metal bowl	
Input pressure p1 with fully-automatic drain	Max. 16 bar Min. 1.5 bar	
Control range p2	0.1 to 3 bar / 0.2 to 6 bar 0.5 to 10 bar / 0.5 to 16 bar	
Mounting position	Vertical, drain plug at bottom	
Mounting type	Bracket and nut, hole $\varnothing$ 30.5 mm Bracket or two through	
Medium temperature	Max. 60 °C (other temperature	
Ambient	Max. 60 °C ranges on	
Filter rating	5 $\mu$ m	
Bowl capacity	Max. 25 cm <sup>3</sup> condensate	
Condensate drain	Semi-automatic Fully-automatic on request	
Weight [g]	392 / 477 with pressure gauge	

### Ordering information

Type Port Options Output press.



**C XX - X X**

Order example: **C 11-K 10-HA**

Port	
11	G 1/4
12	G 3/8
Options	
<b>K-HA</b>	Plastic bowl
<b>M-SR</b>	Metal bowl with sight glass
<b>S</b>	Bowl guard

**Please use the suffix  
»A« to order fully-  
automatic drain**

#### Description

- Block design
- Simple block mounting with other devices using conical clamps and half threads
- Joiner sets (**KP 11**) required for block mounting
- Pressure setting can be locked by pushing the knob down
- Flow direction indicated by arrows
- **Entry in direction of arrow**
- **Independent of inlet pressure**
- Pressure gauge  $\varnothing$  40 mm included
- Pressure gauge can be mounted at both ends
- Lockable adjusting knob (**on request**)
- Filter rating acc. to ISO 4003, glass bead test
- Bowl guard can be retrofitted without tools

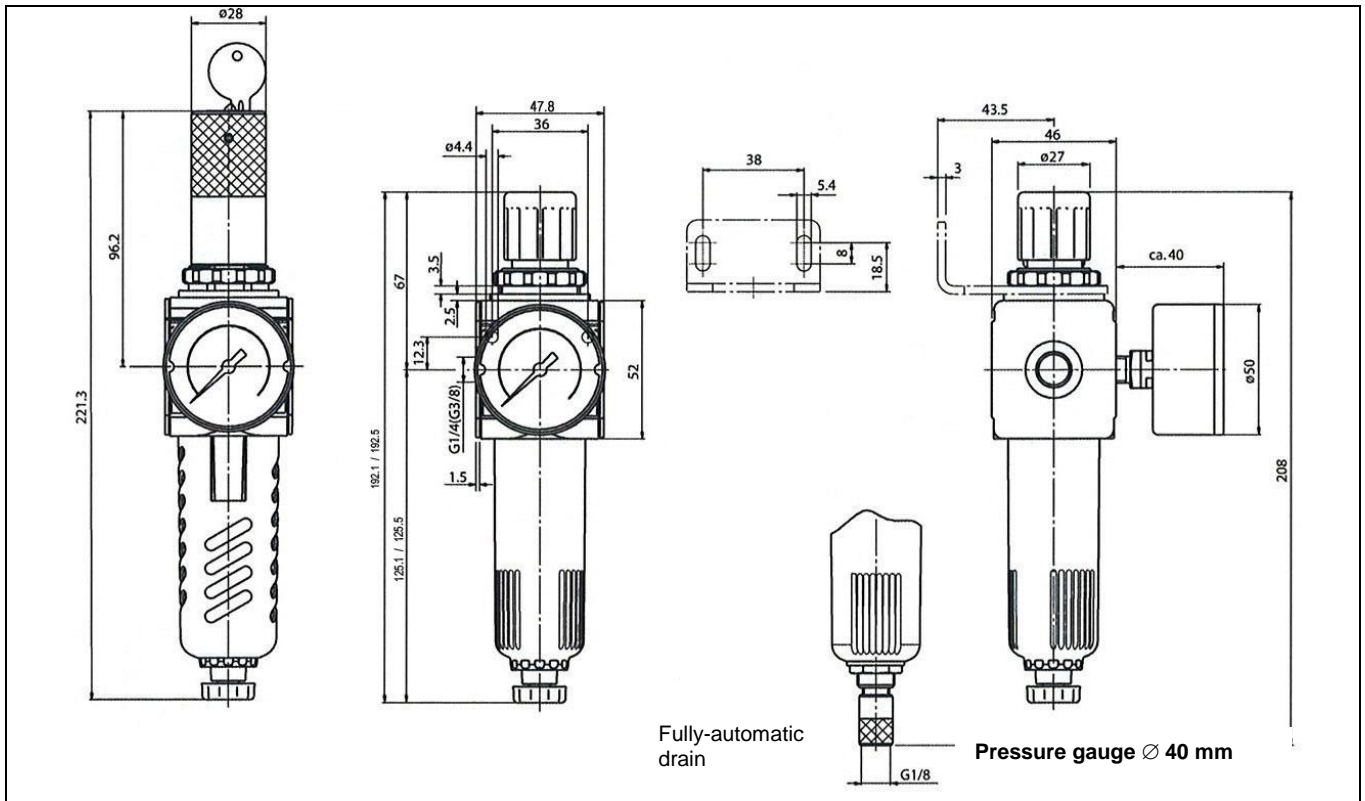
#### Materials

Part	Material
Head piece (body)	Z 410
Spring bonnet	POM-brass
Diaphragm	→ NBR-brass
Pressure spring	Galvanised
Valve cone	→ steel
Counter-pressure spring	NBR-brass
O-ring 30 x 2	→ Stainless
Spring bonnet, lockable	steel NBR
Lock cylinder	POM-Al
Filter element 5 $\mu$ m	Brass
Condensate bowl	PE
Baffle	Polycarbonate

#### Main spare parts

Part	Part No.
→ <b>Set of wearing parts</b> - <b>Diaphragm, cmpl.</b> - Valve cone, cmpl.	<b>22.1811.4</b>
Pr. gauge $\varnothing$ 40 mm, G1/4	
0 to 4 bar	110.01-KD
0 to 6 bar	110.02-KD
0 to 10 bar	110.03-KD
0 to 16 bar	110.04-KD

### Dimensions [mm]

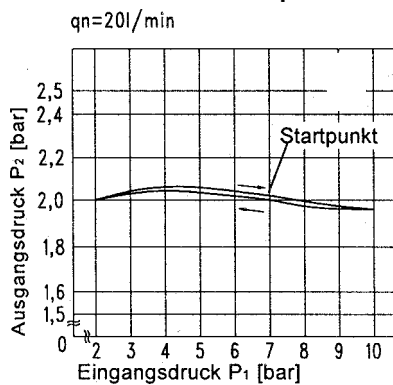


### Flow rates

Art. No.		C 11	C 12
Output pressure $p_2 = 6.3$ [bar]	QN $\text{m}^3/\text{h}$	90	90
Nominal flow ( $\Delta p = 1$ bar)	l/min	1600	1600

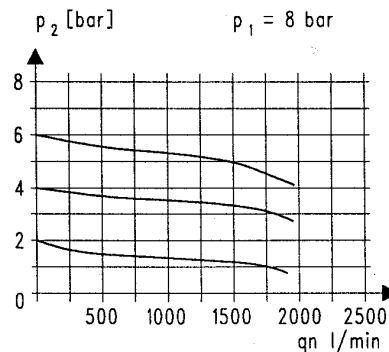
### Hysteresis

Hysteresis of  $p_2$  as a function of rising (falling)  $p_1$  with a constant draw-off quantity QN 20 l/min  
 Basic setting (starting point):  $p_1: 7.0$  bar  
 $p_2: 2.0$  bar



### Flow characteristic

Control range 0.5 to 10 bar



### Accessories

Designation	Order No.
Nut M30x1.5	R 11-55
Mounting bracket with nut R 11-55	MV 30
Mounting bracket with 2 screws, compl.	ZW 11
Joiner set	KP 11
Joiner set for narrow diverter block	KP 11 Z
Metal bowl with sight glass	MS 11 FS
Metal bowl with sight glass and fully-autom. drain valve	MS 11 FS-A
Polycarbonate bowl with semi-automatic drain valve	KS 11 F-FA
Polycarbonate bowl with fully-automatic drain valve	KS 11 F-A
Bowl guard	SK 11
Filter element 5 $\mu\text{m}$	611.6.905
Automatic drain valve	655.6.900