

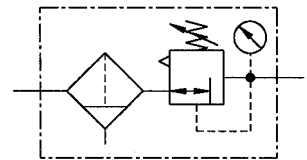
## Filter regulators

Size 4

**678.42**  
G 3/4

**678.43**  
G 1

0.5 to 10 bar  
0.5 to 16 bar



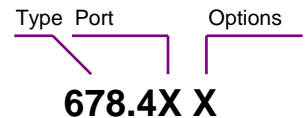
### Characteristics

Type	678.42	678.43
Port	G 3/4	G 1
Pressure gauge port	G 1/4	
Type of construction	Diaphragm pressure regulator with self-relieving design Centrifugal filter Sintered filter element  Special versions on request	
Input pressure $p_1$	Max. 16 bar with plastic bowl Max. 25 bar with metal bowl	
Input pressure $p_1$ with fully-automatic drain	Max. 16 bar Min. 1.5 bar	
Control range $p_2$	0.5 to 10 bar / 0.5 to 16 bar (standard) 0.5 to 3 bar / 0.5 to 6 bar on request	
Mounting position	Vertical, drain plug at bottom	
Mounting type	Bracket	
Medium temperature	Max. 60 °C (other temperature ranges on request)	
Ambient temperature	Max. 60 °C (other temperature ranges on request)	
Filter rating	40 $\mu\text{m}$ , 8 $\mu\text{m}$ on request	
Bowl capacity	Max. 300 cm <sup>3</sup> condensate	
Condensate drain	Manual, semi-automatic Fully-automatic on request	
Weight [g]	2860 / 3000 with pressure gauge	

### Materials

Part	Material
Head piece (body)	Al
Spring bonnet	Al-brass
Adapter	Al
Diaphragm	→ NBR-brass
Pressure spring	Galvanised steel
Valve cone	→ NBR-brass
Counter-pressure spring	Stainless steel
O-ring 68 x 3	→ NBR
Filter element 40 $\mu\text{m}$	Polyethylene
Condensate bowl	Polycarbonate
Baffle	PA

### Ordering information



Order example: **678.43 K-HA**

Port	
42	G 3/4
43	G 1
Options	
<b>K-HA</b>	Plastic bowl
<b>M</b>	Metal bowl
<b>S</b>	Bowl guard

Please use the suffix »A« to order fully-automatic drain

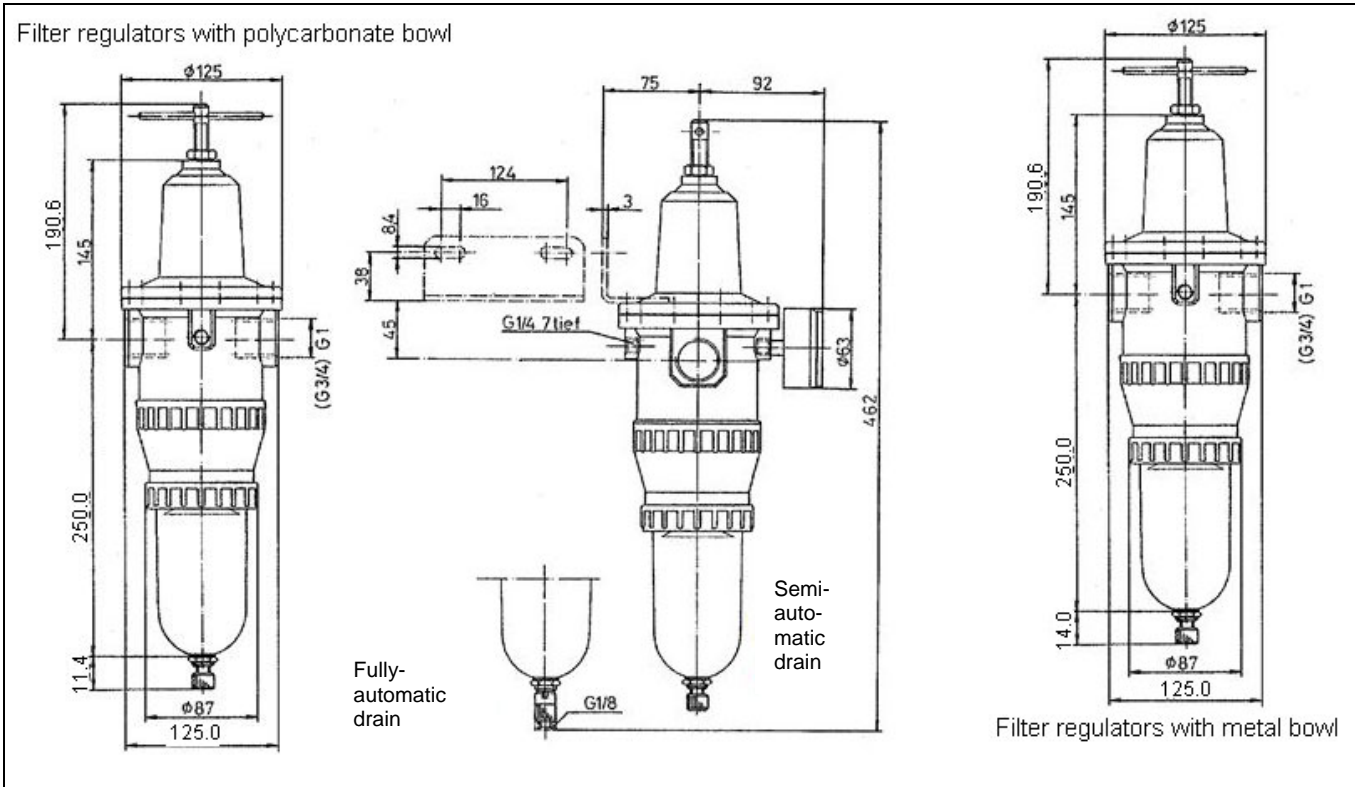
### Description

- Standard design
- Pressure setting can be locked with lock nut on adjusting screw
- Flow direction indicated by arrows
- Independent of inlet pressure
- Pressure gauge  $\varnothing$  63 mm included
- Pressure gauge can be mounted at both ends
- Filter rating acc. to ISO 4003
- Bowl guard can be retrofitted

### Accessories

Designation	Order No.
Mounting bracket	H 86
Fully-automatic drain (external)	65/0-N
Fully-automatic drain (internal)	655.6.900
Bowl guard	SK 03
Filter element 40 $\mu\text{m}$	655.6.940
8 $\mu\text{m}$	655.6.908
Plastic bowl	650/2-HA
Metal bowl	650/12

Dimensions [mm]

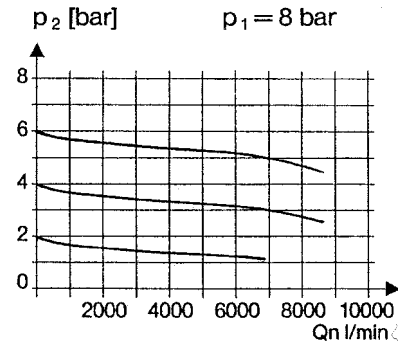


Flow rates

Flow rates at  $p_1 = 8$  bar

Output pressure $p_2$		6
Nominal flow ( $\Delta p = 1$ bar)	QN $m^3/h$	420
	$l/min$	7000

Flow characteristic



Hysteresis

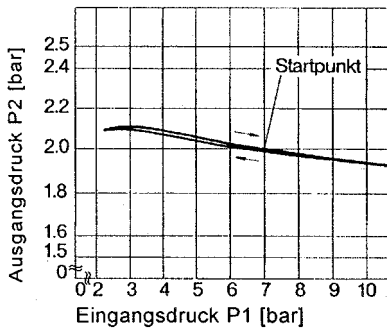
Hysteresis of  $p_2$  as a function of rising (falling)

$p_1$  at a constant draw-off rate QN 20 l/min

Basic setting (starting point):  $p_1: 7.0$  bar

$p_2: 2.0$  bar

Qn = 20 l/min



Main spare parts

Part	Part No.
→ Set of wearing parts	22.643.4
- Diaphragm	
- Valve cone	
- O-ring 68x3	
Pr. gauge $\varnothing 63$ mm, G1/4	
0 to 4 bar	215-KD
0 to 6 bar	216-KD
0 to 10 bar	217-KD
0 to 16 bar	218-KD