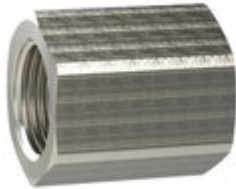


Puša šesterokotna, reducirana G 3/4 i., M16x1.5 i.



Kategorija: [Socket with outer hex, reduced nickel-plated brass](#)
Šifra: **136576RIE**

(slika je simbolična)

Kratek opis

Bushing, exterior hexagonal, red. G 3/4 i. M16x1.5 i. nickel-plated brass, Max. working pressure 25 bar, Max. operating temp. 150°C
Suitable for air, water, oil, steam, etc.

Tehnične Specifikacije

Material	Nickel-plated brass CW614N
Navoj 1	G 3/4
Navoj 2	M16x1.5
Max. delovni tlak [bar]	25
L1 [mm]	28.0
a/f [mm]	32
Max. delovna temperatura [°C]	150